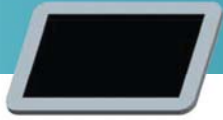




Controller Individual Nozzle Control

It is altek's objective to provide the complete solution in regards to components utilised in the production of field sprayers. This includes providing our customers with electronic controllers. To fulfill this aim, altek set up a strategic alliance with other companies which have the same attitude towards quality and willingness to perform at highest level. With the Smart Nozzle System altek provides absolute precision, highest environmental protection and maximized operating comfort concerning electronic controllers. The possibility of controlling all nozzles individually along the a sprayline is unique.



SMART NOZZLE

- reduces spray overlap to a minimum
- saves chemical
- radio control nozzle check
- guidance
- capable to retrofit to most makes of sprayers

Smart Nozzle GPS control of single nozzles providing excellent application accuracy and efficiency.



DIRECT CONTROL



MULTI-SPRAY
DIRECT CONTROL

Using GPS the Smart Nozzle System allows the control of each individual nozzle on the spray line. Each nozzle is a section. This individual nozzle control opens up new dimensions and precision in crop protection.

SMART NOZZLE:

Smart Nozzle uses altek valves fitted to each nozzle, either Direct Control / Multi-Spray twin or quad / Elektra depending on the customers requirements.

APPLICATION SAVINGS:

Reduction in overlaps results in chemical application savings in excess of 10%. In addition by filling the sprayer with the volume of chemical actually required less chemical is wasted in washing out operations.

Increased accuracy during liquid fertilizer application reduces the possibility of crop damage from over / under application.

WHAT USERS SAY:

“We no longer send excess chemical back to the manufacturer as we only buy the quantities we need. We were expecting the reductions in overlaps to bring slight savings in chemical applications of around 4-5%, but in reality, the savings we have seen are a minimum of 10%.”

Ian Wilson, H. A. DAY, Greet Farm Gloucestershire, in: Arable Farming, March 2014 (3 seasons)

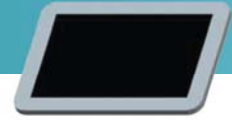
“My original objective in purchasing the Smart Nozzle System was to reduce the unacceptable spray overlap caused as my sprayer, an Alanco Sprayranger, had only 3 sections on a 18 m boom. Now into my 4th season we have seen our chemical use reduced by 13-14%.

The initial cost of the system was recouped in less than 3 years on a 500 acre farm. An unexpected benefit of the system was the sheer ease of use in field with the Smart Nozzle System taking care of all the nozzle switching. Prior to the start of this season we have upgraded our system to the latest Android Tablet, this is very user friendly and the new guidance added to the system is the business! The system can be transferred fairly easily should sprayer be changed.”

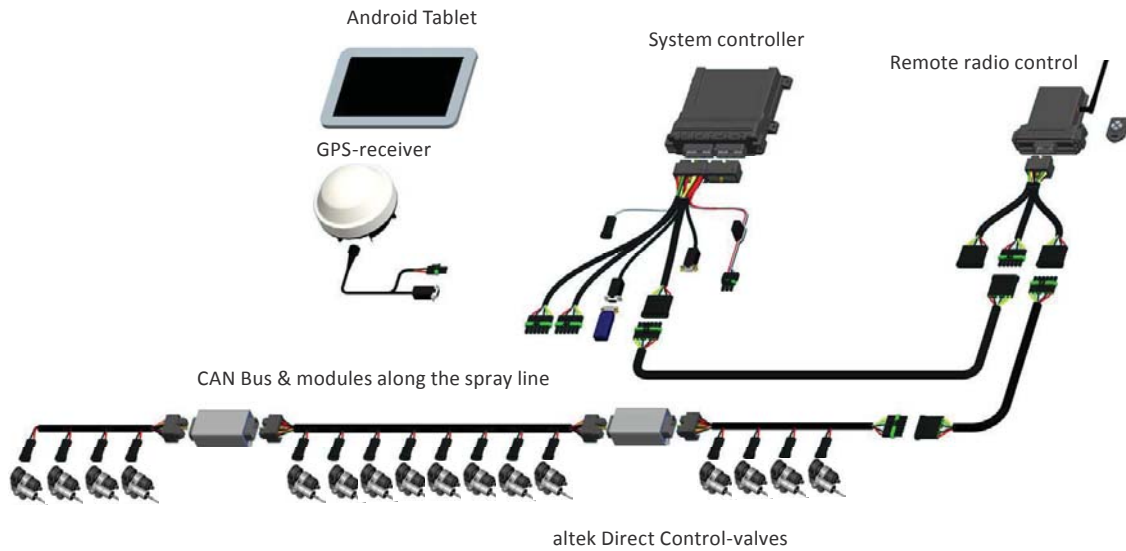
Giles Swift, Wealden, Kent, March 2014 (4 seasons)

“This is our second smart nozzle system, the original system we had fitted to a nine year old trailed Knight laser sprayer. We have a lot of irregular shaped fields so it is very difficult to avoid “double dosing” which was easy to spot in particular after liquid nitrogen applications by the Vs that we had in the field. The savings on chemical, time, operator fatigue and reduced crop damage, made it an easy decision when we purchased a new Hardi Navigator 2 years ago to have the latest Android / Bluetooth smart nozzle system fitted.”

Richard Day, Wrawby, Brigg, North Lincolnshire, March 2014 (5 Saisons)



THE ALTEK / HARRISON GPS - OPERATED SMART NOZZLE SYSTEM
NOW WITH BLUETOOTH CONNECTIVITY AND GUIDANCE



APPLICATION ACCURACY AND COST BENEFITS WITH INDIVIDUAL NOZZLE CONTROL



Controller · Electronic Upgrade Kit

Electronic Upgrade Kit for sprayers

- for all makes of sprayers
- 5–9 sections
- makes your farming work easier
- efficient, economical and environmentally friendly

Electric Control upgrade kits for all brands of field sprayers

Article-No.	Type
83079	Electronic Upgrade kit for sprayers, 5 sections
80612	Electronic, SPRAYDOS-Computer, 5 sections
80613	Electronic, basic equipment (wheel sensor, battery cable, installation material)
83609	Electronic, distributor for SPRAYDOS, 39 pins
83097	Flowmeter cpl Rapid Check 1" ceramic 50 bar, 25 mm fittings
83089	Sensor Rapid Check 1" cpl with AMP plug Super Seal
81746	Electric proportional regulator 400
83477	Pressure filter with back rinsing cock
81493	Pressure control valve QFPR, 10 bar
81034	Modular-Fit Valve Assembly 5V 3-Way AS24 2-W CP PR DIN175301
80790	Quick-Fit Valve manually 2-Way AS24
09184	Plug-in hose tail AS40/ø25/90° cpl
34230	Female hose tail AS24/ø15
18545	Safety pin AS24
81602	Plug-in hose tail AS40/AS40 cpl
80604	Mounting brackets for section valve Modular-Fit block 90°

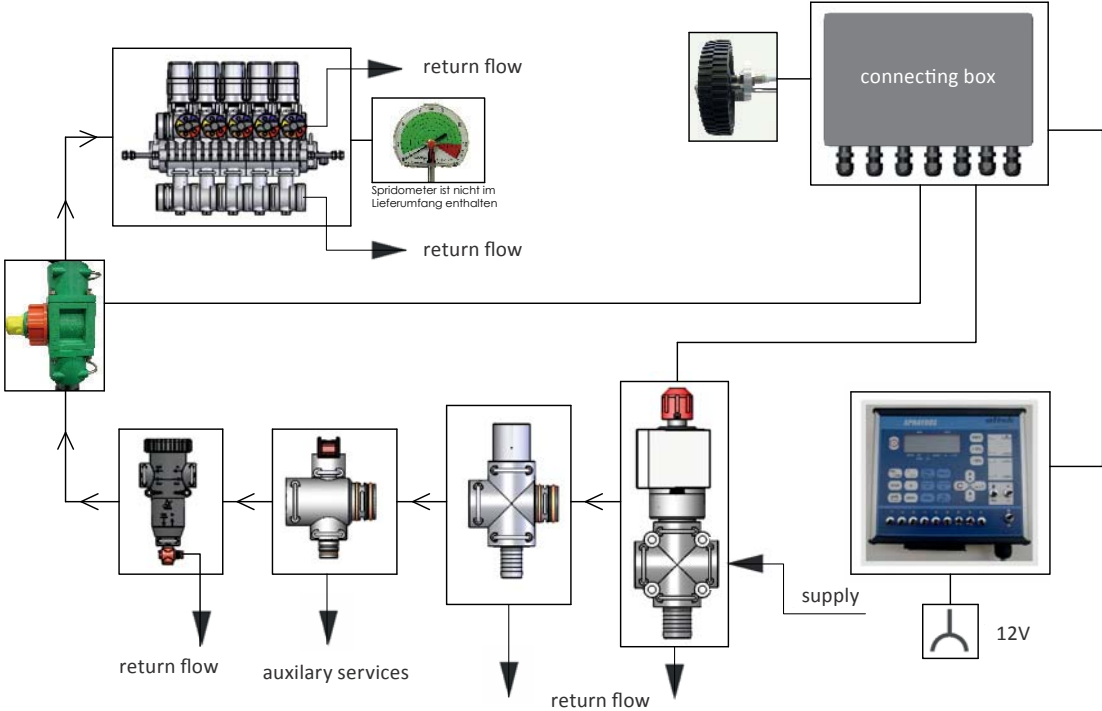
On request

Article-No.	Type
83430	Electronic Upgrade kit for sprayers, 7 sections
83431	Electronic Upgrade kit for sprayers, 9 sections

Controller · Electronic Upgrade Kit



altek complete system, easy to fit





Controller · altek conversion kit MFV for RAU/ Kverneland-Telemat-remote control

altek conversion kit Modular-Fit-Valves (MFV)

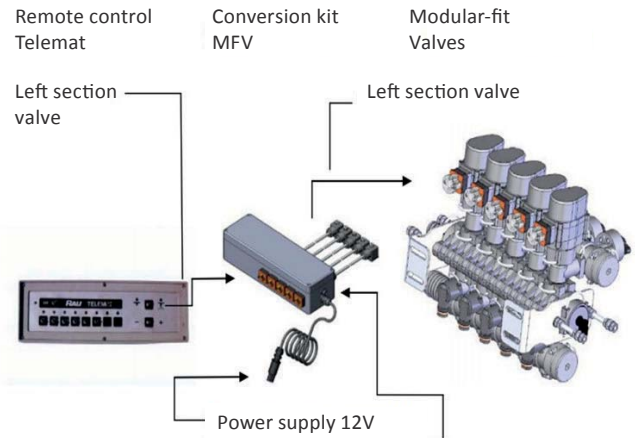
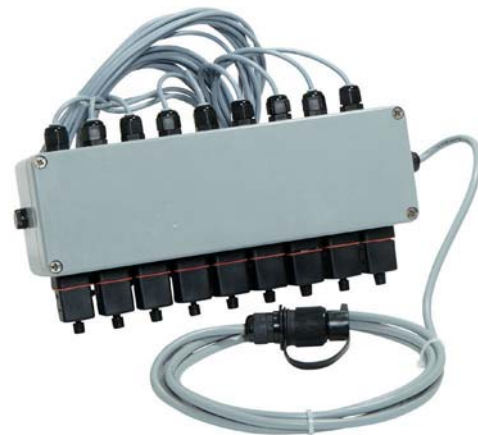
for an easy conversion of sprayers with integrated RAU/Kverneland-Telemat remote control (Telemat EV and EVD) to altek-MFV operation

- simple replacement of solenoid section valves with up to date Modular Fit Valves
- modern technology and best operational safety
- Simple and fast maintenance
- secure spare parts supply for the future
- existing Telemat can be used also in the future

Contains:

altek conversion kit for Telemat with MFV and the corresponding section valve block:

Article-No.	Type
83802	Conversion kit MFV for Telemat for 5 TB (5 sections)
83408	Conversion kit MFV for Telemat for 6-9 TB
83470	Modular-Fit Valve Assembly 5 TB 5V 3-Way AS24 3-W CP PR DIN175301 (+) - Upgrade kit
83471	Modular-Fit Valve Assembly 7 TB 7V 3-Way AS24 3-W CP PR DIN175301 (+) - Upgrade kit
83472	Modular-Fit Valve Assembly 8 TB 8V 3-Way AS24 3-W CP PR DIN175301 (+) - Upgrade kit
83473	Modular-Fit Valve Assembly 9 TB 9V 3-Way AS24 3-W CP PR DIN175301 (+) - Upgrade kit
83446	Cable extension 6,5 m with 3-pole plugs to ISO 12369



Please consider the following:

- Depending on the type of sprayer, more hose tails and connectors will be needed.
- Additionally a 12 Volts power outlet can be required.
- When required more return hoses have to be reverted to the barrel.
- Metal supports have to be modified and adjusted.

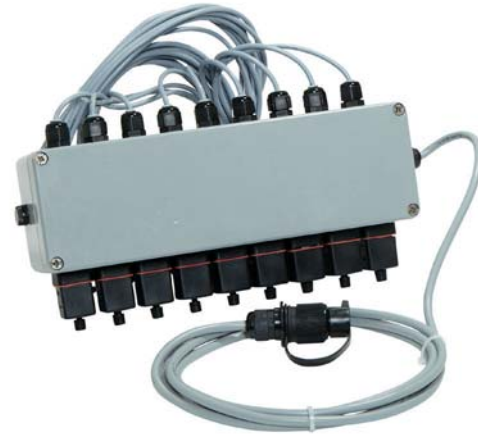
Please contact us, if you are interested – we would like to support you!



altek conversion kit Modular-Fit-Valves (MFV)

for an easy conversion of sprayers with altek solenoid valves (older Amazone UF-, US-, UG-sprayers) to altek Modular-Fit Valves

- simple replacement of solenoid section valves with up to date Modular Fit Valves with actuator motors
- modern technology and best operational safety
- Simple and fast maintenance
- secure spare parts supply for the future
- existing electronics assembly/Telemat can be used also in the future



Contains:

altek conversion kit for Telemat with MFV and the corresponding section valve block



Article-No.	Type
83623	Modular-Fit Valve Assembly for conversion kit, AMAZONE 5V 3-Way AS24 3-W CP PR DIN175301 (+)
83624	Modular-Fit Valve Assembly for conversion kit, AMAZONE 7V 3-Way AS24 3-W CP PR DIN175301 (+)
83802	Conversion kit MFV for 5 TB (sections)
83408	Controller telemat MFV for 6-9 TB

Please consider the following:

- Depending on the type of sprayer, more hose tails and connectors will be needed.
- Additionally a 12 Volts power outlet can be required.
- When required more return hoses have to be reverted to the barrel.
- Metal supports have to be modified and adjusted.

Please contact us, if you are interested – we would like to support you!



Controller · Control unit for electrical ball valves

Control unit for electrical ball valves

- Simple to retrofit all makes of Sprayers with electrical ball valves
- simple to operate from alongside the Sprayer or from the cabine
- ball valves can be fitted in location to suit the sprayer system to reduce hose lengths

Article-No.	Description
83351	Sprayer Mounted Master Control including Power supply loom (2 core with fuse) Valve looms – 10m cable to both valves Remote panel connection Worklight control and connection (LED LAMP) Pressure washer / Aux Supply control and connection
84298	In-Cab remote Control including connection loom from cab to Master Controller

