



## AS Plug-In Fittings

AS20 • AS24 • AS30 • AS40 • AS50

It contains a wide range of possible combinations of plug-in fittings, e.g. hose tails, tee pieces, cross pieces and tank fittings. The fittings are connected together using a simple safety pin – the quickest method of connecting when assembling a sprayer fluid system.

Our fittings are compatible with the altek Plug-In System components (pressure regulator, ball valves, control valves, etc.). Their outstanding feature is their excellent strength. We use glass-fibre reinforced POM and FPM gaskets (Viton) for sealing.

- **Push-fit with a secure staple fastening**
- **Less production time and costs required in manufacturing**
- **Reduced need to use sealing tape / thread fittings**
- **Allows assembly workers the flexibility to move the fittings when assembled without any chance of breaking the seal**





## AS Plug-In Fittings

Like the altek modular system which has been used successfully since many years, also our plug-in system has proven itself as reliable and resonable system.

The combination of male and female plug in fittings and the simple safety connection with the safety pin is still the fastest possibility for fittings up to 50 mm of the altek Plug in System (AS50) to create a hose connection which can be undone easily at any time. We have decided to go on using this highly efficient system in our products. However, we will also dedicate ourselves to the market requirements and offer adapters for BSP-threats for our products in the future.

### How does the altek Plug-In System function?

The altek Plug-In System consists of male and female fittings which are sealed with an o-ring fitted onto the male AS fitting, which seals once pushed into the corresponding AS Female housing. The two parts are then locked together using a stainless u-shape clip. The Sizes of the AS quick fit system indicates which range of fittings they will connect. Today we have fittings available in Altek system sizes AS20, AS24, AS30, AS40 and AS50.

### Example:

A plug in hose tail AS30/ø32/90° is connected with a female hose tail AS30/ø25. To fix the plug in connection, a safety clip AS30 is needed.

**AS30** = Size of the plug-in system

**32 mm** = diameter of the connected hose line

e.g. a plug-in hose tail AS24/ø19 can be put on a mechanical valve 36/AS24. To fix it, safety clip AS24 has to be used.

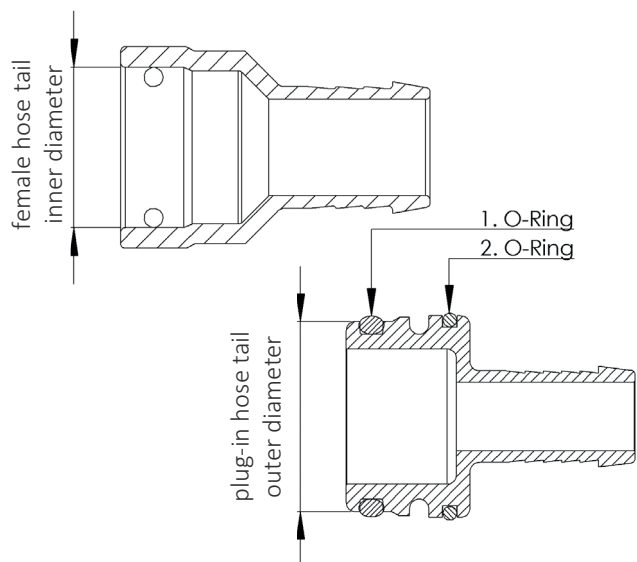


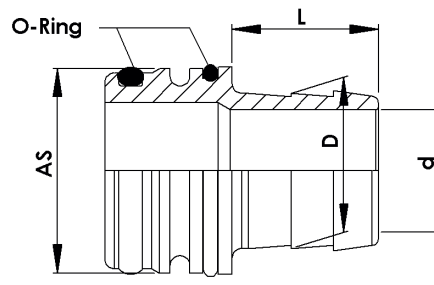
Table to identify the size of the AS plug-in fittings

AS	Plug-in hose tail 1. outer-ø (without O-ring)	female hose tail inner-ø	1. O-ring	2. O-ring	Safety clip standard	Safety clip short
20	17,8	20	14,0 x 2,5 FPM 75		Safety clip AS20	
24	21,9	24	18,0 x 2,5 FPM 75		Safety clip AS24	
30	32	34,2	25,0 x 4,0 FPM 75		Safety clip AS30	Safety Pin AS30 shortened version
40	41,6	44	35,0 x 4,0 FPM 75	38,0 x 3,0 FPM 75	Safety clip AS40	Safety Pin AS40 shortened version
50	47,9	50,3	40,0 x 4,0 FPM 75	42,0 x 3,0 FPM 75	Safety clip AS50	

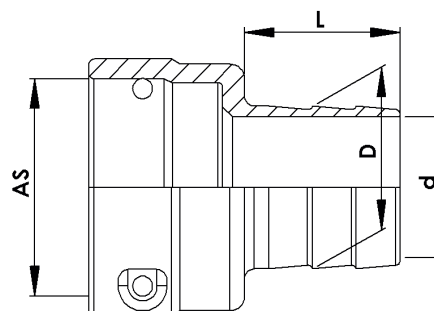


## Plug-In Fittings AS20

Plug-in hose tails AS20 complete with O-rings							Replacement O-rings	
Article-No.	Type	AS	D mm	d mm	L mm	Pressure [bar]	Article-No.	Type
11827	Plug-in hose tail AS20/ø13 cpl	20	12	7	20	20	37618	14,0 x 2,5 FPM 75
00464	Plug-in hose tail AS20/ø15 cpl	20	15	10,3	24	20	37618	14,0 x 2,5 FPM 75
81495	Plug-in hose tail AS20/ø17 cpl	20	17	12	27	20	37618	14,0 x 2,5 FPM 75
34150	Plug-in hose tail AS20/ø20 cpl	20	20	15	32	20	37618	14,0 x 2,5 FPM 75

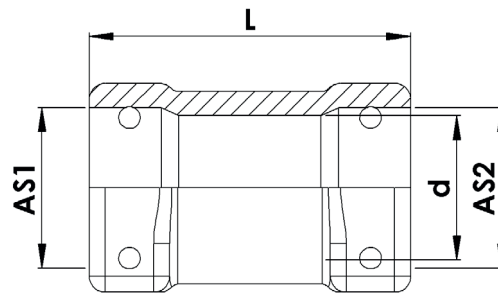


Female hose tails AS20 without safety clips							Safety Pins	
Article-No.	Type	AS	D mm	d mm	L mm	Pressure [bar]	Article-No.	Type
34237	Female hose tail AS20/ø12	20	12	7	20	20	02752	AS20
34236	Female hose tail AS20/ø15	20	15	9,5	24	20	02752	AS20
34238	Female hose tail AS20/ø17	20	17	12	27	20	02752	AS20
80572	Female hose tail AS20/ø25	20	25	18	38	20	02752	AS20

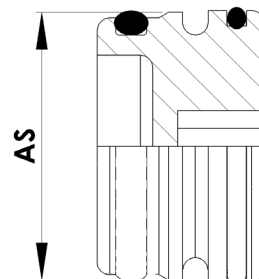




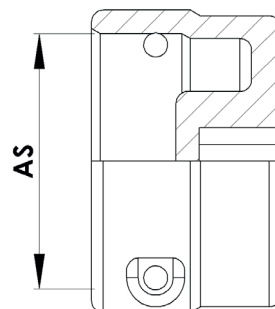
Extension/Reduction female						Safety clip	
Article-No.	Type	AS1	AS2	d mm	L mm	Article-No.	Type
18805	Connector AS20	20	20	17,5	40	21931	AS20



Plug AS20 complete with O-ring				Replacement O-ring	
Article-No.	Type	AS	Pressure [bar]	Article-No.	Type
80728	Dummy plug AS20 cpl	20	20	37618	14,0 x 2,5 FPM 75



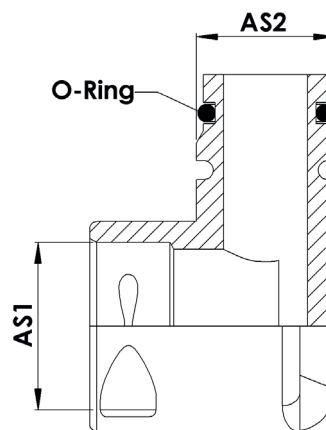
Cap AS20				Safety Pin	
Article-No.	Type	AS	Pressure [bar]	Article-No.	Type
10271	Cap AS20	20	20	02752	AS20





## AS Plug-In Fittings · AS20

Angle reduction AS20 complete with O-ring					Replacement O-ring		Necessary accessories	
Article-No.	Type	AS1	AS2	Pressure bar	Article-No.	Type	Article-No.	Type
47094	Angle reduction AS24/AS20 cpl	24	20	20	37618	14,0 x 2,5 FPM 75	18545	Safety Pin AS24



### altek Safety Pins

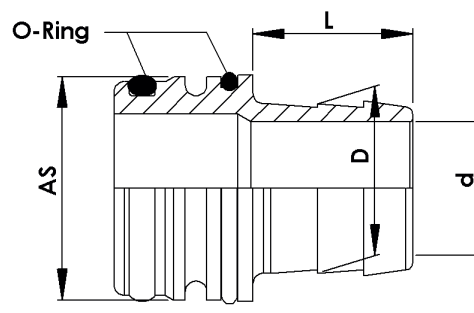
Article-No.	Type
02752	Safety Pin AS20
18545	Safety Pin AS24
02632	Safety Pin AS30
83774	Safety Pin AS30 short version
05241	Safety Pin AS40
83875	Safety Pin AS40 short version
17997	Safety Pin AS50



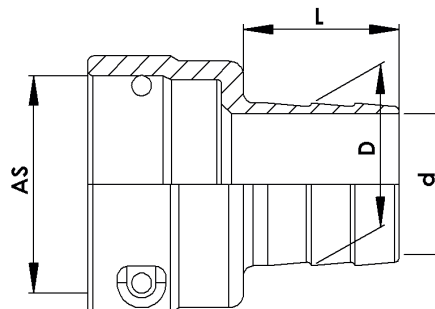


## Plug-In Fittings AS24

Plug-in hose tails AS24 complete with O-rings							Replacement O-rings	
Article-No.	Type	AS	D mm	d mm	L mm	Pressure [bar]	Article-No.	Type
81348	Plug-in hose tail AS24/ø13 cpl	24	13	7	25	20	83069	17,12 x 2,6 FPM 80
80517	Plug-in hose tail AS24/ø15 cpl	24	15	10,3	24	20	83069	17,12 x 2,6 FPM 80
81054	Plug-in hose tail AS24/ø20 cpl	24	20	14	32	20	83069	17,12 x 2,6 FPM 80



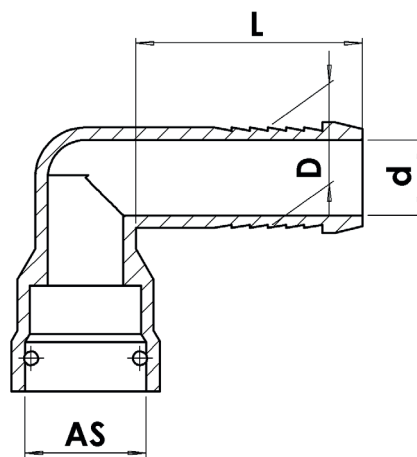
Female hose tails AS20 without safety clips							Safety Pins	
Article-No.	Type	AS	D mm	d mm	L mm	Pressure [bar]	Article-No.	Type
34230	Female hose tail AS24/ø15	24	15	10	27	20	18545	AS24
34229	Female hose tail AS24/ø17	24	17	12	27	20	18545	AS24
34227	Female hose tail AS24/ø20	24	20	14	27	20	18545	AS24
47934	Female hose tail AS24/ø25	24	25	20,5	32	20	18545	AS24



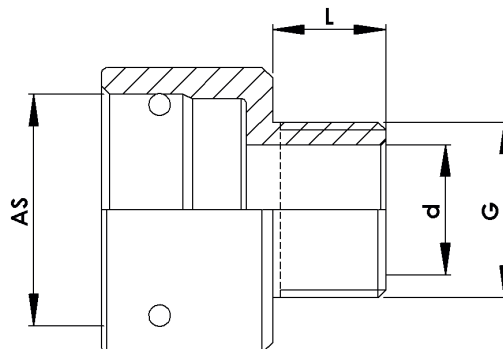


## AS Plug-In Fittings · AS24

Female hose tails AS24 90° without safety pins							Safety Pins	
Article-No.	Type	AS	D mm	d mm	L mm	Pressure [bar]	Article-No.	Type
82250	Female hose tail AS24/ø13/90°	24	13	7	34	20	18545	AS24
80349	Female hose tail AS24/ø15/90°	24	15	10	42	20	18545	AS24
80780	Female hose tail AS24/ø16/90°	24	16	12	40	20	18545	AS24
81791	Female hose tail AS24/ø17/90°	24	17	11	46	20	18545	AS24
80350	Female hose tail AS24/ø20/90°	24	20	15	45	20	18545	AS24
80781	Female hose tail AS24/ø22/90°	24	22	17	40	20	18545	AS24



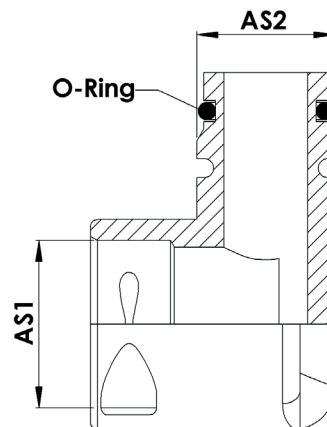
Female hose tails AS24 with thread without safety pins							Safety Pin	
Article-No.	Type	AS	G	d mm	L mm	Pressure [bar]	Article-No.	Type
83403	Female hose tail AS24/ G½ male	24	G½	14	26	15	05241	AS24



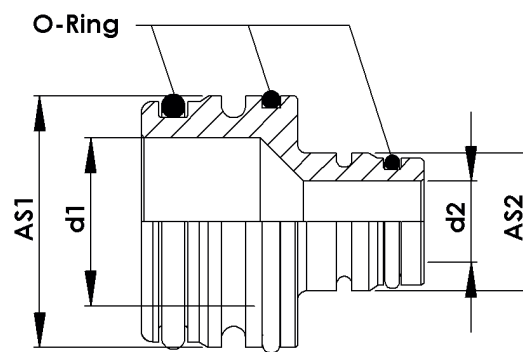




Angle reduction AS24 complete with O-ring					Replacement O-ring		Necessary accessories	
Article-No.	Type	AS1	AS2	Pressure [bar]	Article-No.	Type	Article-No.	Type
47094	Angle reduction AS24/AS20 cpl	24	20	20	37618	14,0 x 2,5 FPM 75	18545	Safety Pin AS24



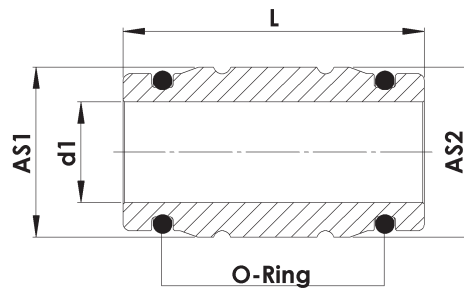
Extension / Reduction AS24 male							Replacement O-rings	
Article-No.	Type	AS1	d1mm	AS2	d2mm	Pressure [bar]	Article-No.	Type
80378	Plug-in hose tail AS30/AS24 cpl with valve seat 120°	30	20	24	14	20	02633	25,0 x 4,0 FPM 75
							83069	17,12 x 2,6 FPM 80
80412	Plug-in hose tail AS40/AS24 cpl	40	29	24	14	20	05243	35,0 x 4,0 FPM 75
							37628	38,0 x 3,0 FPM 75
							83069	17,12 x 2,6 FPM 80



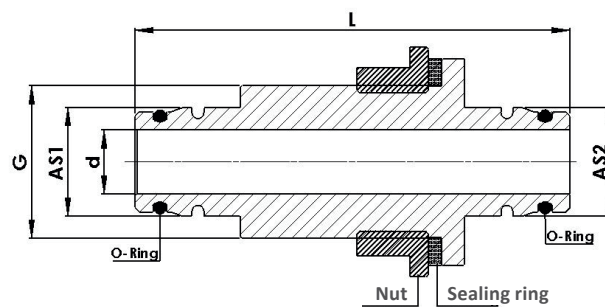


## AS Plug-In Fittings · AS24

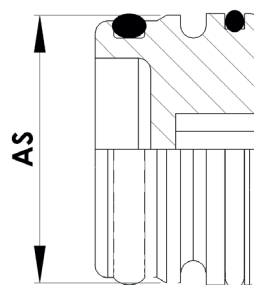
Extension/Reduction AS24 female						Necessary accessories	
Article-No.	Type	AS1	AS2	d mm	L mm	Article-No.	Type
83635	Plug-in hose tail AS24	24	24	14	42	18545	Safety Pin AS24



Tank fitting AS24					
Article-No.	Type	AS1	AS2	d mm	L mm
83845	Tank fitting set (G 1) AS24	24	24	14	95



Plug AS24 complete with O-ring				Replacement O-ring	
Article-No.	Type	AS	Pressure [bar]	Article-No.	Type
80376	Dummy plug AS24 cpl	24	20	83069	17,1 x 2,6 FPM 80

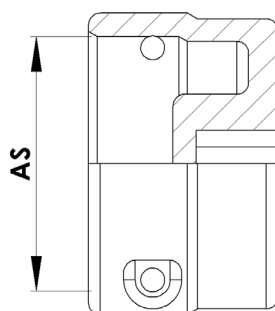


## AS Plug-In Fittings · AS24



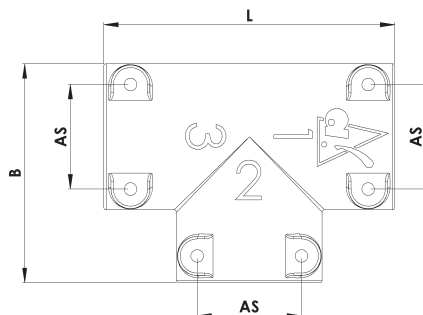
### Blind cap AS24 complete with O-ring

Article-No.	Type	AS	Pressure [bar]
47886	Cap AS24	24	20



### T-piece AS24

Article-No.	Type	AS	Pressure [bar]
83612	T-Piece AS24 female	24	20



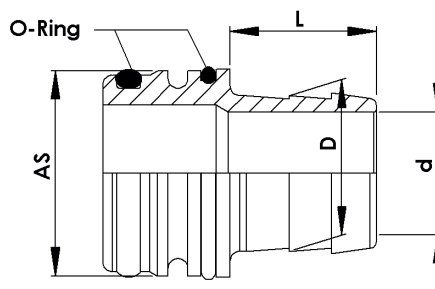
### altek Safety Pins

Article-No.	Type
02752	Safety Pin AS20
18545	Safety Pin AS24
02632	Safety Pin AS30
83774	Safety Pin AS30 short version
05241	Safety Pin AS40
83875	Safety Pin AS40 short version
17997	Safety Pin AS50

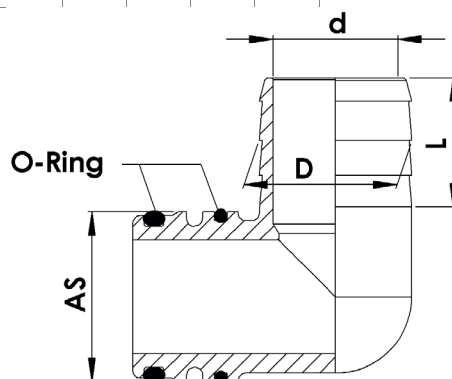


## Plug-In Fittings AS30

Plug-in hose tails AS30 complete with O-rings							Replacement O-rings	
Article-No.	Type	AS	D mm	d mm	L mm	Pressure [bar]	Article-No.	Type
33791	Plug-in hose tail AS30/ø17 cpl	30	17	12	28	20	02633	25,0 x 4,0 FPM 75
00420	Plug-in hose tail AS30/ø20 cpl with valve seat 120°	30	20	15	32	20	02633	25,0 x 4,0 FPM 75
81119	Plug-in hose tail AS30/ø25 cpl with valve seat 120°	30	25	20,5	36	20	02633	25,0 x 4,0 FPM 75
01399	Plug-in hose tail AS30/ø33 cpl with valve seat 120°	30	33	26	36	20	02633	25,0 x 4,0 FPM 75

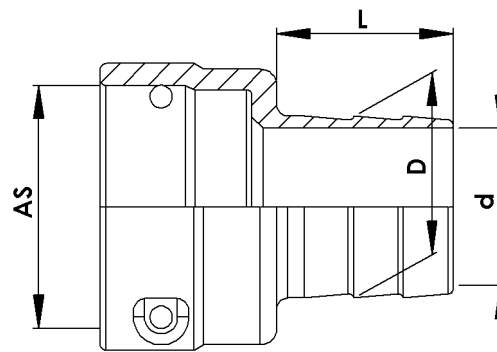


Plug-in hose tails AS30 90° complete with O-rings							Replacement O-rings	
Article-No.	Type	AS	D mm	d mm	L mm	Pressure [bar]	Article-No.	Type
09178	Plug-in hose tail AS30/ø20/90° cpl	30	20	15	31	20	02633	25,0 x 4,0 FPM 75
08337	Plug-in hose tail AS30/ø25/90° cpl with valve seat 120°	30	25	18	29,5	20	02633	25,0 x 4,0 FPM 75
33793	Plug-in hose tail AS30/ø33/90° cpl with valve seat 120°	30	33	25	27,5	20	02633	25,0 x 4,0 FPM 75

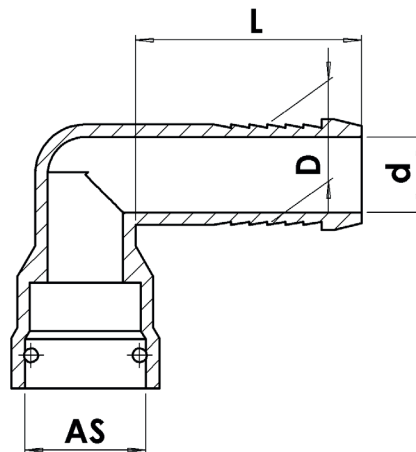




Female hose tails AS30 without safety pins							Safety Pins	
Article-No.	Type	AS	D mm	d mm	L mm	Pressure [bar]	Article-No.	Type
34234	Female hose tail AS30/ø20	30	20	15,5	28	20	02632	AS30
34233	Female hose tail AS30/ø25	30	26	20,5	31	20	02632	AS30



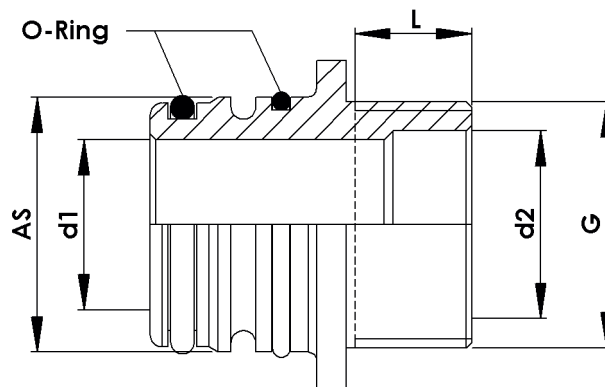
Female hose tail AS30 90° without safety pin							Safety Pin	
Article-No.	Type	AS	D mm	d mm	L mm	Pressure[bar]	Article-No.	Type
83588	Female hose tail AS30/ø20/90°	30	20	14	40	20	02632	AS30



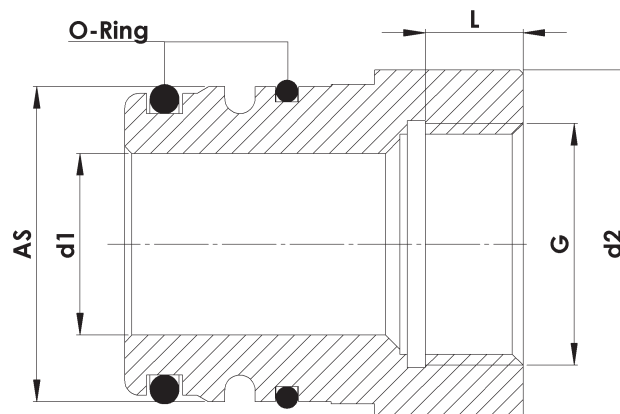


## AS Plug-In Fittings · AS30

Plug-in hose tails AS30 with BSP-thread or NPT-thread complete with O-rings								Replacement O-rings	
Article-No.	Type	AS	G	d1 mm	d2 mm	Lmm	Pressure [bar]	Article-No.	Type
80538	Plug-in hose tail AS30/G1/male cpl	30	G1	20	25	21,5	20	02633	25,0 x 4,0 FPM 75
81136	Plug-in hose tail AS30/G1½/male cpl	30	G1½	20	38	21,5	20	02633	25,0 x 4,0 FPM 75

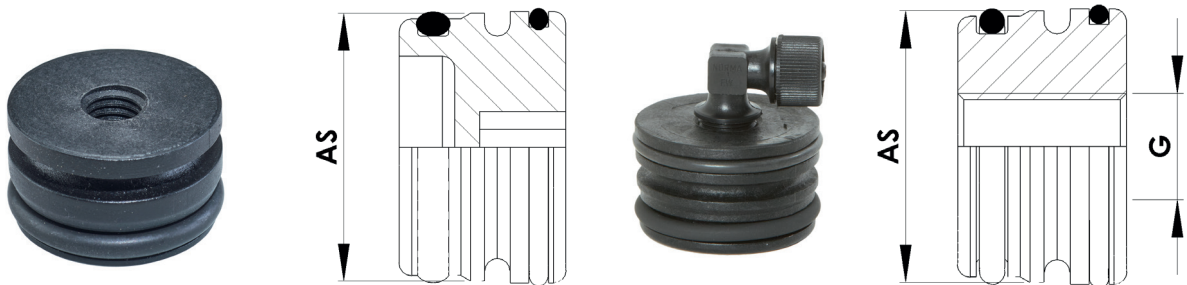


Plug-in hose tails AS30 with BSP-inside-thread complete with O-rings								Replacement O-ring	
Article-No.	Type	AS	G	d1 mm	d2 mm	Lmm	Pressure [bar]	Article-No.	Type
82465	Plug-in hose tail AS30/G1/male cpl	30	G1	20	42	20	20	02633	25,0 x 4,0 FPM 75

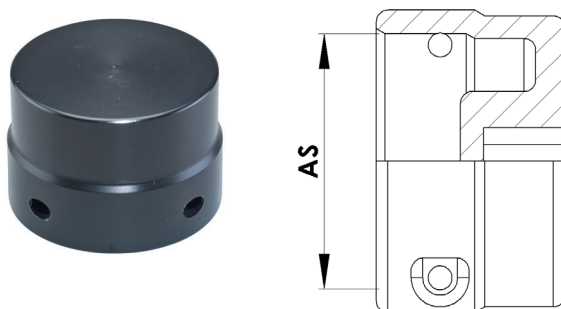




Dummy plugs AS30 complete with O-rings					Replacement O-rings	
Article-No.	Type	AS	G	Pressure [bar]	Article-No.	Type
41108	Dummy plug AS30 cpl	30	–	20	02633	25,0 x 4,0 FPM 75
83614	Dummy plug AS30/G½/female cpl	30	G½	20	02633	25,0 x 4,0 FPM 75



Blind cap AS30 complete with O-ring			
Article-No.	Type	AS	Pressure [bar]
80801	Cap AS30	30	20
83869	G¼	30	20
84229	G¾	30	20

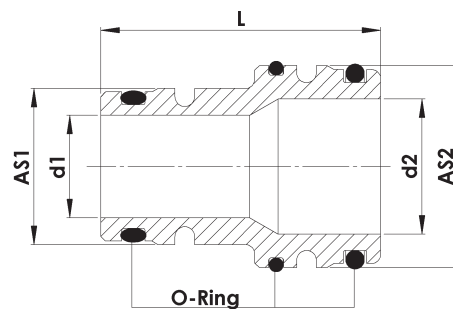




## AS Plug-In Fittings · AS30

### Extension / Reduction AS24 male

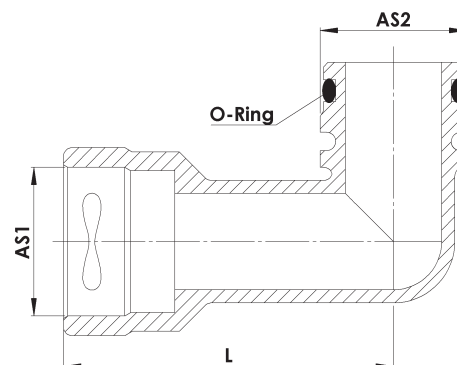
Article-No.	Type	AS1	AS2	d mm	L mm
80378	Adaptor AS30/AS24 cpl with valve seat 120°	30	24	14	46
83636	Plug-in hose tail AS30/AS30 cpl	30	30	22	53
83458	Adaptor AS30/AS40 cpl	30	40	22	60



### Male/female connector AS30 complete with O-rings

### Replacement O-rings

Article-No.	Type	AS1	AS2	L mm	Pressure [bar]	Article-No.	Type
47098	Male/female connector AS30/90° cpl	30	30	75,5	20	02633	25,0 x 4,0 FPM 75

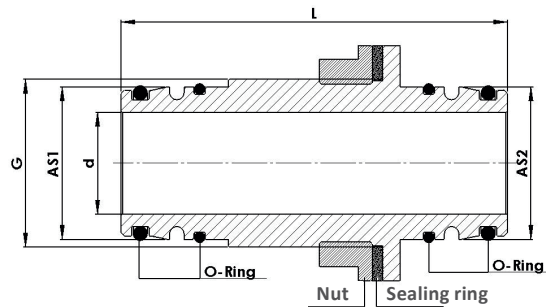






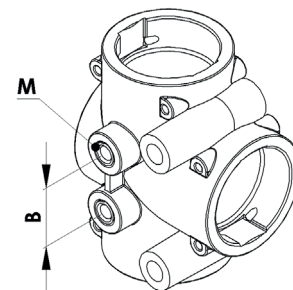
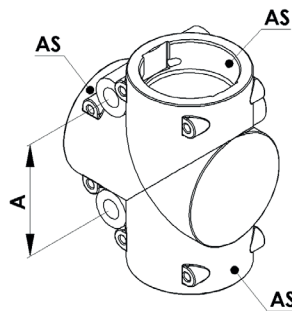
## Tank Fitting AS30 with BSP-thread

Article-No.	Type	AS1	AS1	d mm	L mm
83840	Tank Fitting set (G 1 ¼) AS30	30	30	21	110



## T- piece AS30

Article-No.	Type	AS	A mm	B mm	Safety Pin	
					standard version	short version
83604	T-piece AS 30	24	13	7	02632	83774



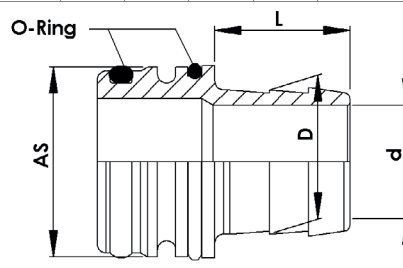
## altek Safety Pins

Article-No.	Type
02752	Safety Pin AS20
18545	Safety Pin AS24
02632	Safety Pin AS30
83774	Safety Pin AS30 short version
05241	Safety Pin AS40
83875	Safety Pin AS40 short version
17997	Safety Pin AS50

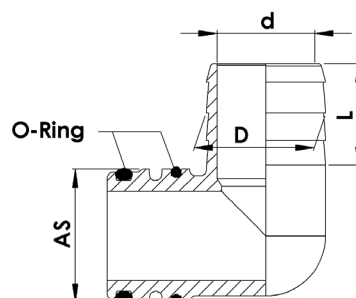


## Plug-In Fittings AS40

Plug-in hose tails AS40 complete with O-rings							Replacement O-rings	
Article-No.	Type	AS	D mm	d mm	L mm	Pressure [bar]	Article-No.	Type
80353	Plug-in hose tail AS40/ø20 cpl	40	20	15	36	20	05243 37628	35,0 x 4,0 FPM 75 38,0 x 3,0 FPM 75
04595	Plug-in hose tail AS40/ø25 cpl	40	25	18	36	20	05243 37628	35,0 x 4,0 FPM 75 38,0 x 3,0 FPM 75
04581	Plug-in hose tail AS40/ø33 cpl	40	33	26	31	20	05243 37628	35,0 x 4,0 FPM 75 38,0 x 3,0 FPM 75
06247	Plug-in hose tail AS40/ø39 cpl	40	39	32	37	15	05243 37628	35,0 x 4,0 FPM 75 38,0 x 3,0 FPM 75
17409	Plug-in hose tail AS40/ø46 cpl	40	46	38	31	5	05243 37628	35,0 x 4,0 FPM 75 38,0 x 3,0 FPM 75

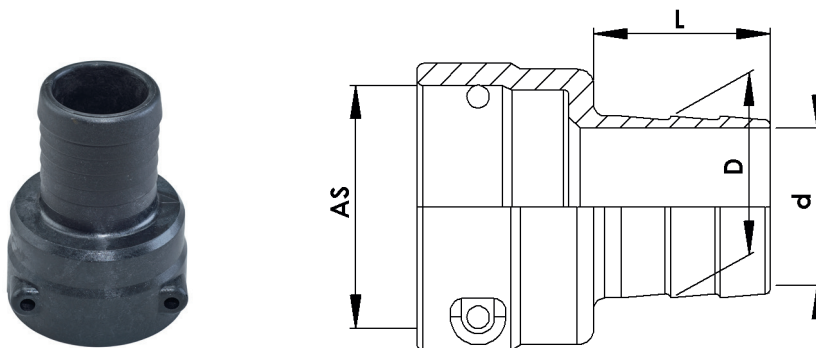


Plug-in hose tails AS40 90° complete with O-rings							Replacement O-rings	
Article-No.	Type	AS	D mm	d mm	L mm	Pressure [bar]	Article-No.	Type
80352	Plug-in hose tail AS40/ø20/90° cpl	40	20	15	28	20	05243 37628	35,0 x 4,0 FPM 75 38,0 x 3,0 FPM 75
09184	Plug-in hose tail AS40/ø25/90° cpl	40	25	18	30	20	05243 37628	35,0 x 4,0 FPM 75 38,0 x 3,0 FPM 75
08874	Plug-in hose tail AS40/ø33/90° cpl	40	33	26	27	20	05243 37628	35,0 x 4,0 FPM 75 38,0 x 3,0 FPM 75
08275	Plug-in hose tail AS40/ø39/90° cpl	40	39	34	27	20	05243 37628	35,0 x 4,0 FPM 75 38,0 x 3,0 FPM 75

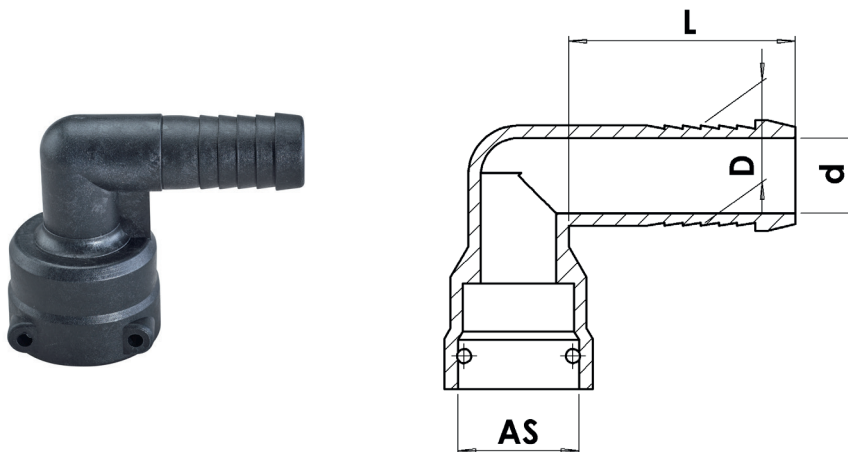




Female hose tails AS40 without safety pins							Safety Pins	
Article-No.	Type	AS	D mm	d mm	L mm	Pressure [bar]	Article-No.	Type
80354	Female hose tail AS40/ø20	40	20	15	35	15	05241	AS40
80357	Female hose tail AS40/ø25	40	25	18	35	15	05241	AS40
34232	Female hose tail AS40/ø33	40	33	28	32	15	05241	AS40
34231	Female hose tail AS40/ø39	40	39	34,5	32	15	05241	AS40
83967	Female hose tail AS40/ø40	40	40	31	38	15	05241	AS40



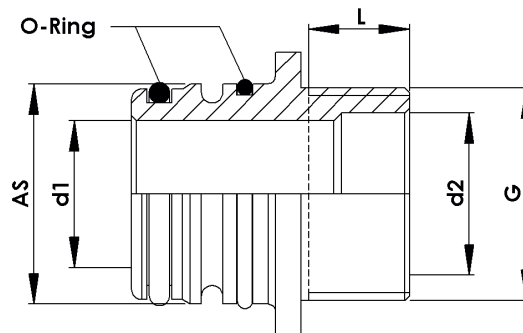
Female hose tails AS30 without safety pins							Safety Pins	
Article-No.	Type	AS	D mm	d mm	L mm	Pressure [bar]	Article-No.	Type
81655	Female hose tail AS40/ø20/90°	40	20	14	41	20	05241	AS40
81654	Female hose tail AS40/ø25/90°	40	25	18	41	20	05241	AS40
81653	Female hose tail AS40/ø33/90°	40	33	26	41	20	05241	AS40
81652	Female hose tail AS40/ø39/90°	40	39	31	41	20	05241	AS40



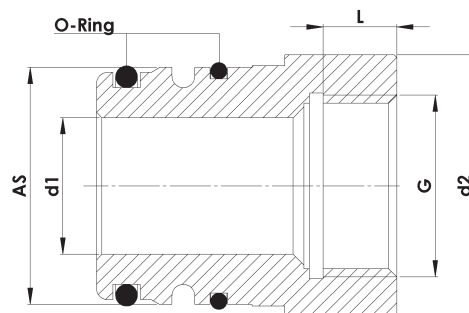


## AS Plug-In Fittings · AS40

Plug-in hose tails AS40 with BSP-thread								Replacement O-rings	
Article-No.	Type	AS	G BSP	d1 mm	d2 mm	Lmm	Pressure [bar]	Article-No.	Type
80361	Plug-in hose tail AS40/G1/male cpl	40	G1	29	25	20	20	05243 37628	35,0 x 4,0 FPM 75 38,0 x 3,0 FPM 75
80398	Plug-in hose tail AS40/G1¼/male cpl	40	G1¼	29	32	20	20	05243 37628	35,0 x 4,0 FPM 75 38,0 x 3,0 FPM 75
81718	Plug-in hose tail AS40/G1½/male cpl	40	G1½	29	38	20	20	05243 37628	35,0 x 4,0 FPM 75 38,0 x 3,0 FPM 75
83073	Plug-in hose tail AS40/G1/male NPT cpl	40	G1	29	20	24	20	05243 37628	35,0 x 4,0 FPM 75 38,0 x 3,0 FPM 75

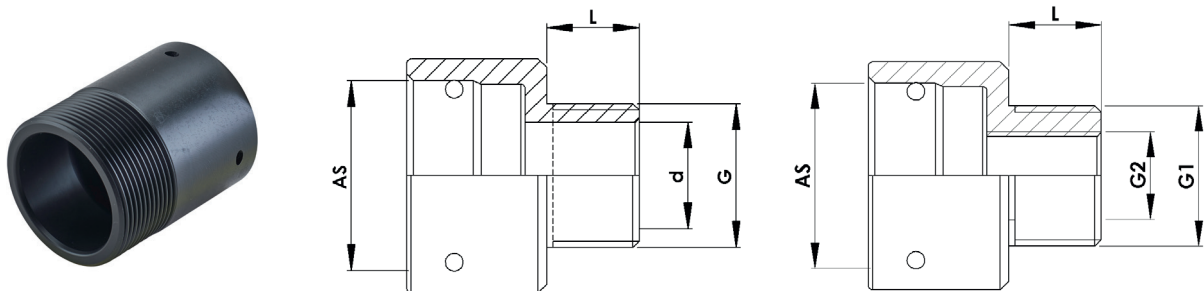


Plug-in hose tails AS40 with BSP-inside-thread complete with O-rings								Replacement O-rings	
Article-No.	Type	AS	G BSP	d1 mm	d2 mm	Lmm	Pressure [bar]	Article-No.	Type
82219	Plug-in hose tail AS40/G1½/ female cpl	40	G1½	29	56	18	20	05243 37628	35,0 x 4,0 FPM 75 38,0 x 3,0 FPM 75
83243	Plug-in hose tail AS40/G1/ female cpl	40	G1	25	48	13,5	20	05243 37628	35,0 x 4,0 FPM 75 38,0 x 3,0 FPM 75
83407	Plug-in hose tail AS40/G2/ female cpl	40	G2	29	67	17,8	20	05243 37628	35,0 x 4,0 FPM 75 38,0 x 3,0 FPM 75
82589	Plug-in hose tail AS40/G1¼/ female cpl	40	G1¼	25	52	13,5	20	05243 37628	35,0 x 4,0 FPM 75 38,0 x 3,0 FPM 75

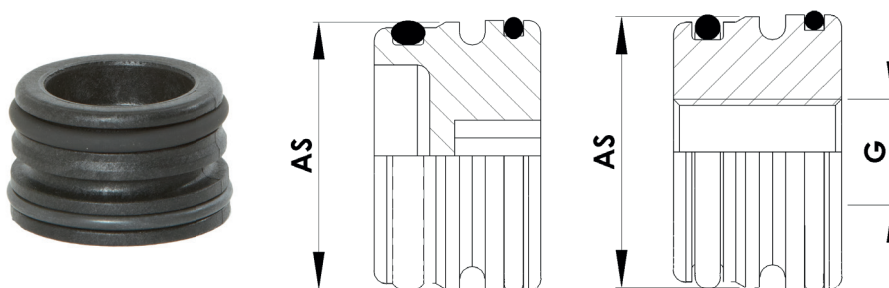




Plug-in hose tails AS40 with BSP-thread or NPT-thread complete with O-rings							
Article-No.	Type	AS	G1 BSP	G2 BSP	d mm	Lmm	Pressure [bar]
80362	Female hose tail AS40/G1/male	40	G1		24,7	21,5	15
81158	Female hose tail AS40/G1½/male	40	G1½		38	24	15
81749	Female hose tail AS40/G1/female	40	G1		30,3	21,5	15
81523	Female hose tail AS40/G1/male/G½ female	40	G1	G2		21,5	15



Plugs AS40 complete with O-rings					Replacement O-rings	
Article-No.	Type	AS	G BSP	Pressure [bar]	Article-No.	Type
80333	Dummy plug AS40 cpl	40		20	05243 37628	35,0 x 4,0 FPM 75 38,0 x 3,0 FPM 75
80460	Dummy plug AS40/G¼/female cpl	40	G¼	20	05243 37628	35,0 x 4,0 FPM 75 38,0 x 3,0 FPM 75
80334	Dummy plug AS40/G¼/female cpl with angle connection for hoses D=6, d=4	40	G¼	20	05243 37628	35,0 x 4,0 FPM 75 38,0 x 3,0 FPM 75
81323	Dummy plug AS40/G¾ /female cpl	40	G¾	20	05243 37628	35,0 x 4,0 FPM 75 38,0 x 3,0 FPM 75

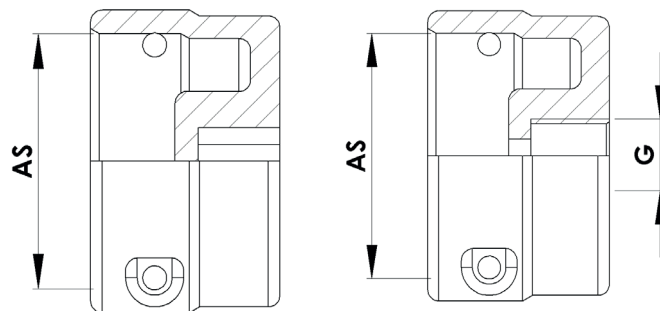




## AS Plug-In Fittings · AS40

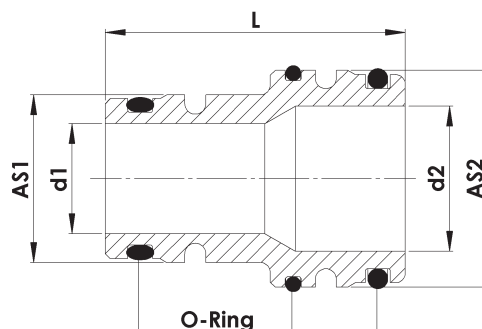
### Blind caps AS40 complete with O-rings

Article-No.	Type	AS	G	Pressure [bar]
47993	Blind cap AS40	40	–	20
80267	Blind cap AS40/G¼/female	40	G¼	20



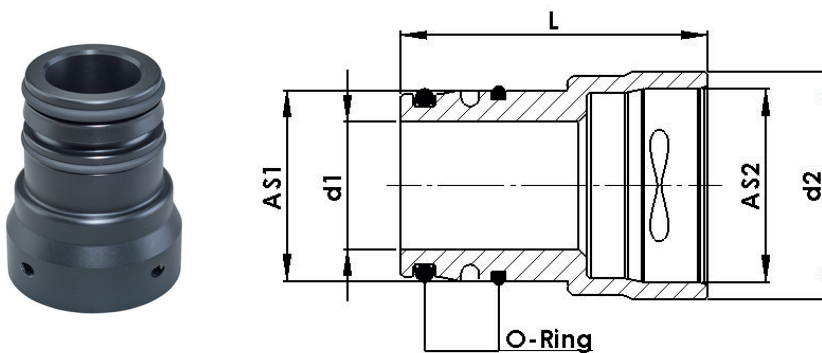
### Extension / Reduction AS40 male

Article-No.	Type	AS1	AS2	d mm	L mm
83458	Adaptor AS30/AS40 cpl	30	40	22	60
80412	Adaptor AS40/AS24 cpl	40	24	14	49
81602	Plug-in hose tail AS40/AS40 cpl	40	40	29	60
82945	Adaptor AS40/AS50 cpl	40	50	29	65

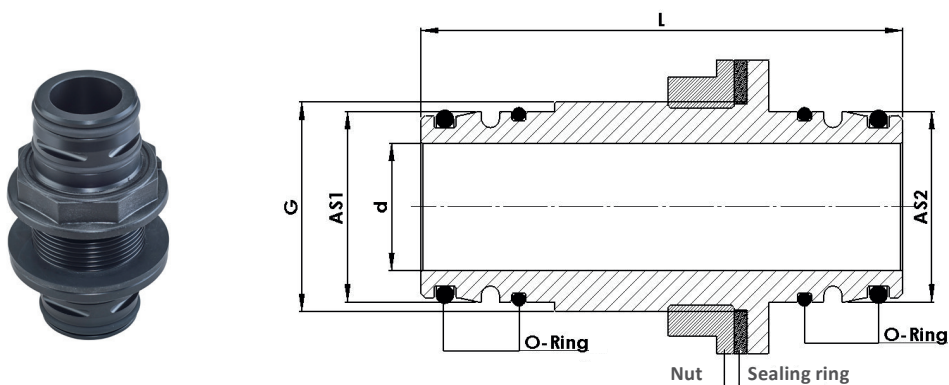




Male/female connector AS40 complete with O-rings							Replacement O-rings	
Article-No.	Type	AS1	AS2	L mm	d1 mm	d2 mm	Article-No.	Type
83708	Male/female connector AS40 male/AS40 female	40	40	70	29	52	05243	35,0 x 4,0 FPM 75
							37628	38,0 x 3,0 FPM 75



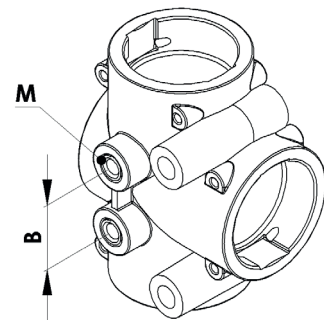
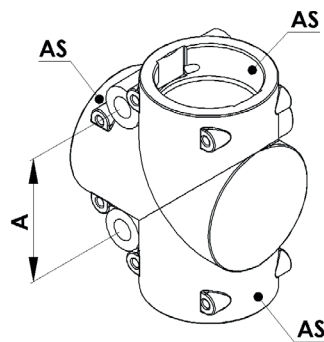
Tank fitting AS40 with BSP-thread						
Article-No.	Type	AS1	AS2	d mm	L mm	G
83725	Tank fitting set (G 1 ½) AS40	40	40	29	110	48



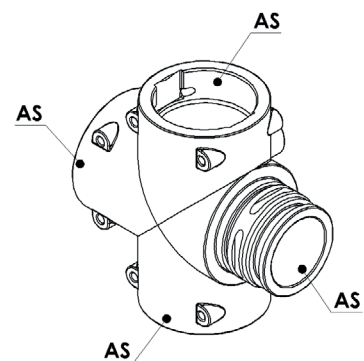
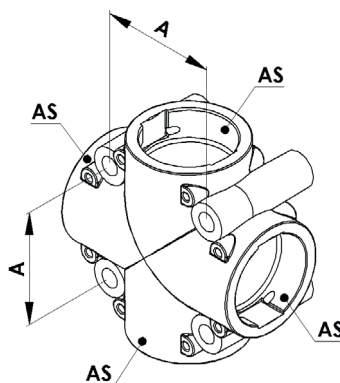


## AS Plug-In Fittings · AS40

T- piece AS40			Safety Pins			
Article-No.	Type	AS	A mm	B mm	standard version	short version
80817	T-piece AS40 mit 2x M8 inserts	40	60	30	05241	83875
80331	T-piece AS40	40	60		05241	83875



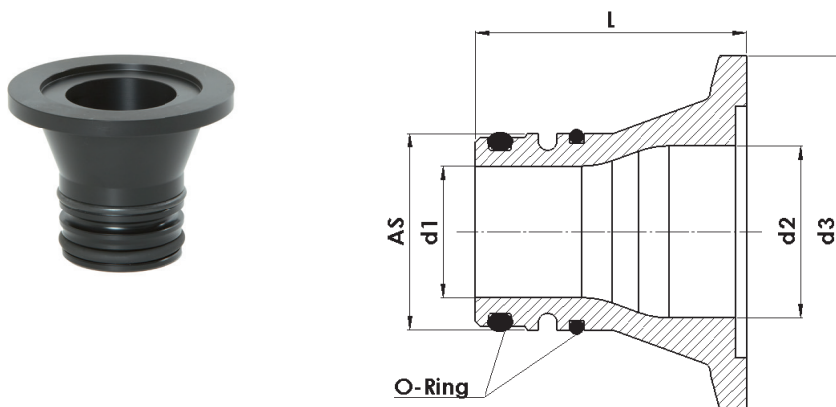
Cross pieces AS40					
Article-No.	Type	AS	A mm	B mm	M
80330	Cross piece 4xAS40	40	60		
80818	Cross piece 4xAS40 with inserts M8	40	60	30	M8
81469	Cage 3xAS40 female, 1xAS40 plug-in with inserts M8 cpl	40		30	M8



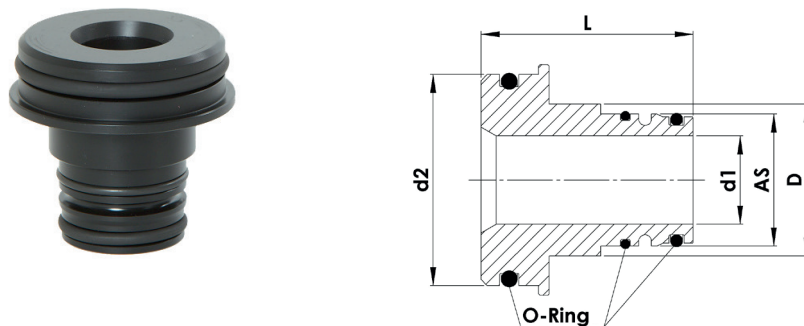




Banjo Fitting AS40 complete with O-rings							Replacement O-rings	
Article-No.	Type	AS	L	d1 mm	d2 mm	d3 mm	Article-No.	Type
82614	Plug-in hose tail AS40/Banjo 2" cpl	40	60	29	38	77,8	05243	35,0 x 4,0 FPM 75
							37628	38,0 x 3,0 FPM 75



Connection AS40 for 5-Way 2" ball valve with altek plug-in System						
Article-No.	Type	AS	d1mm	d2mm	dmm	Lmm
83405	Adaptor 2"/Plug-in hose tail AS40 cpl	40	29	69,5	69,5	70





## AS Plug-In Fittings · AS40

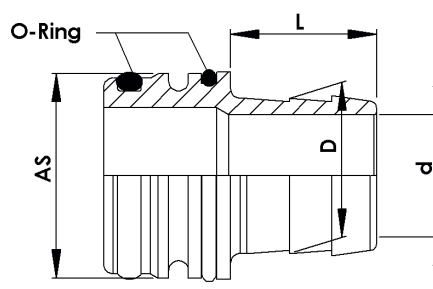


altek Safety Pins	
Article-No.	Type
02752	Safety Pin AS20
18545	Safety Pin AS24
02632	Safety Pin AS30
83774	Safety Pin AS30 short version
05241	Safety Pin AS40
83875	Safety Pin AS40 short version
17997	Safety Pin AS50

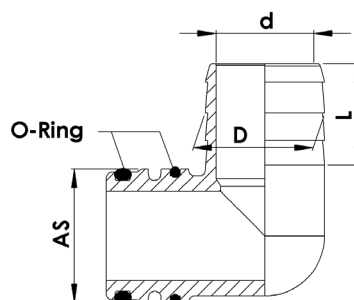


## Plug-In Fittings tails AS50

Plug-in hose tails AS50 complete with O-rings							Replacement O-rings	
Article-No.	Type	AS	D mm	d mm	L mm	Pressure [bar]	Article-No.	Type
22040	Plug-in hose tail AS50/ø39 cpl	50	39	34	33	5	18544 41214	40,0 x 4,0 FPM 75 42,0 x 3,0 FPM 75
17157	Plug-in hose tail AS50/ø46 cpl	50	46	38	33	5	18544 41214	40,0 x 4,0 FPM 75 42,0 x 3,0 FPM 75
80464	Plug-in hose tail AS50/ø50 cpl	50	50	42	38	5	18544 41214	40,0 x 4,0 FPM 75 42,0 x 3,0 FPM 75
83673	Plug-in hose tail AS50/ø63 cpl	50	63	54	59	5	18544 41214	40,0 x 4,0 FPM 75 42,0 x 3,0 FPM 75



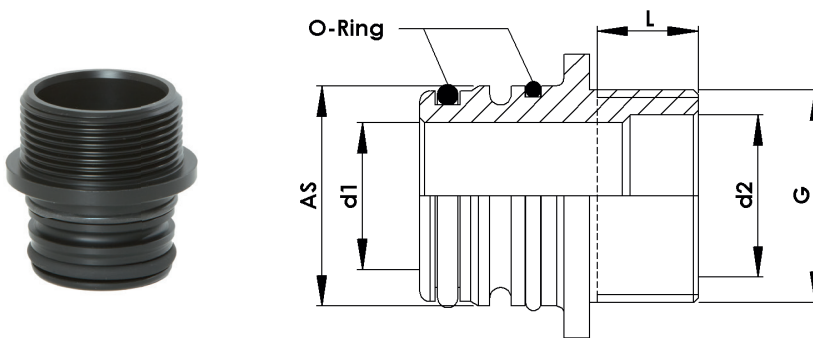
Plug-in hose tails AS50 90° complete with O-rings							Replacement O-rings	
Article-No.	Type	AS	D mm	d mm	L mm	Pressure [bar]	Article-No.	Type
24891	Plug-in hose tail AS50/ø39/90° cpl	50	39	34	27	5	18544 41214	40,0 x 4,0 FPM 75 42,0 x 3,0 FPM 75
17330	Plug-in hose tail AS50/ø46/90° cpl	50	46	38	27	5	18544 41214	40,0 x 4,0 FPM 75 42,0 x 3,0 FPM 75
82472	Plug-in hose tail AS50/ø50/90° cpl	50	50	42	33	5	18544 41214	40,0 x 4,0 FPM 75 42,0 x 3,0 FPM 75



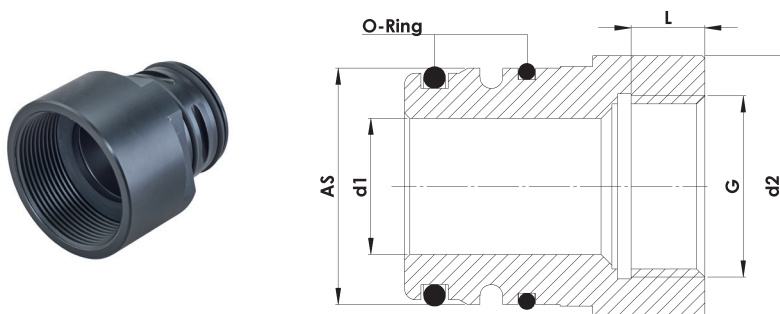


## Plug-in hose tails with BSP-thread and NPT-thread

Plug-in hose tails AS50 with BSP-thread or NTP-thread								Replacement O-rings	
Article-No.	Type	AS	G	d1	d2	L	Pressure [bar]	Article-No.	Type
82993	Plug-in hose tail AS50 G1½ male cpl	50	G1½	35	37,5	28	5	18544 41214	40,0 x 4,0 FPM 75 42,0 x 3,0 FPM 75
82944	Plug-in hose tail AS50 G2 cpl	50	G2	35	47	28	5	18544 41214	40,0 x 4,0 FPM 75 42,0 x 3,0 FPM 75



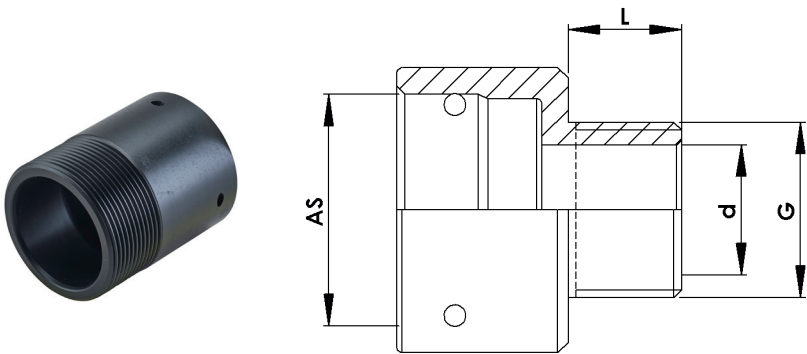
Plug-in hose tails AS50 with BSP-inside-thread								Replacement O-rings	
Article-No.	Type	AS	G	d1	d2	L	Pressure [bar]	Article-No.	Type
83310	Plug-in hose tail AS50 G1½ female cpl	50	G1½	35	56	27	20	18544 41214	40,0 x 4,0 FPM 75 42,0 x 3,0 FPM 75
83287	Plug-in hose tail AS50 G2 female cpl	50	G2	35	68	24	20	18544 41214	40,0 x 4,0 FPM 75 42,0 x 3,0 FPM 75
83684	Plug-in hose tail AS50 G2½ female cpl	50	G2½	35	83	24	20	18544 41214	40,0 x 4,0 FPM 75 42,0 x 3,0 FPM 75





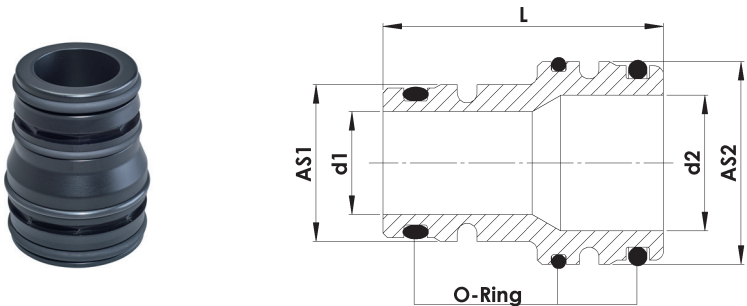
Female hose tails with thread

Female hose tails AS50 with BSP thread, without safety pins						Safety Pin	
Article-No.	Type	AS	G	L mm	Pressure [bar]	Article-No.	Type
82960	Female hose tail AS50 G2 male	50	G2	30	20	17997	standard



Extension/Reduction male

Extension/Reduction AS50 male							Replacement O-rings	
Article-No.	Type	AS1	d1 mm	AS2	d2 mm	Pressure [bar]	Article-No.	Type
82945	Plug-in hose tail AS50/AS40 cpl	50	35	40	29	20	05243	35,0 x 4,0 FPM 75
							37628	38,0 x 3,0 FPM 75
							41214	42,0 x 3,0 FPM 75
							18544	40,0 x 4,0 FPM 75
83637	Plug-in hose tail AS50/AS50 cpl	50	38	50	38	20	41214	42,0 x 3,0 FPM 75
							18544	40,0 x 4,0 FPM 75

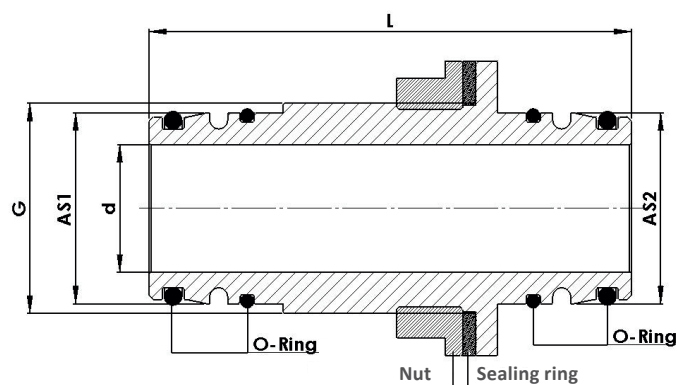




## AS Plug-In Fittings · AS50

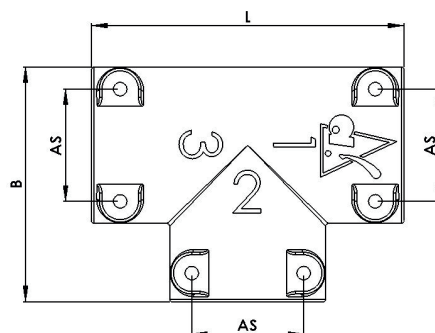
### Tank fitting AS50 with BSP-thread

Article-No.	Type	AS1	AS2	d1 mm	d2 mm	L
83726	Tank Fitting Set G1½ AS40/AS50	40	50	29	35	110
83729	Tank Fitting Set G2 AS40/AS50	50	50	35	35	116



## T-pieces

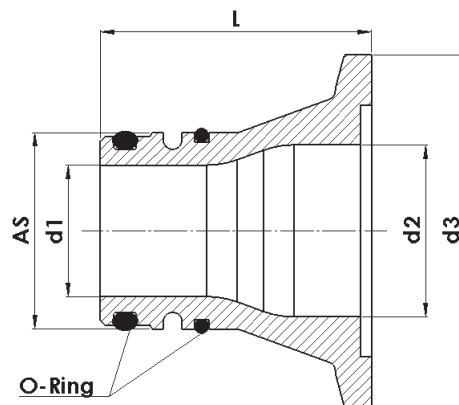
T-pieces AS50		Safety Pin			
Article-No.	Type	AS	B mm	L mm	Article-No.
83620	T-piece AS50	50	88	116	17997





## Banjo Fitting

Banjo Fitting AS50 complete with O-rings							Replacement O-rings	
Article-No.	Type	AS	L	d1 mm	d2 mm	d3 mm	Article-No.	Type
83131	Plug-in hose tail AS50/Banjo 2 cpl Full Port	50	60	35	50,8	83	18544 41214	40,0 x 4,0 FPM 75 42,0 x 3,0 FPM 75
82887	Plug-in hose tail AS50/Banjo 2 cpl	50	60	35	38	78	18544 41214	40,0 x 4,0 FPM 75 42,0 x 3,0 FPM 75



## Connector for ball valve 5-way 2" with AS plug-in system

Article-No.	Type	AS	d1 mm	d2 mm	D mm	Lmm
83697	Connector 2" / plug-in hose tail AS50 cpl	50	31	69,5	50	70

