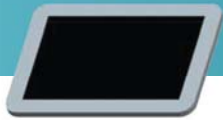




## Controller Individual Nozzle Control

It is altek's objective to provide the complete solution in regards to components utilised in the production of field sprayers. This includes providing our customers with electronic controllers. To fulfill this aim, altek set up a strategic alliance with other companies which have the same attitude towards quality and willingness to perform at highest level. With the Smart Nozzle System altek provides absolute precision, highest environmental protection and maximized operating comfort concerning electronic controllers. The possibility of controlling all nozzles individually along the a sprayline is unique.



### SMART NOZZLE

- reduces spray overlap to a minimum
- saves chemical
- radio control nozzle check
- guidance
- capable to retrofit to most makes of sprayers

Smart Nozzle GPS control of single nozzles providing excellent application accuracy and efficiency.



DIRECT CONTROL



MULTI-SPRAY  
DIRECT CONTROL

Using GPS the Smart Nozzle System allows the control of each individual nozzle on the spray line. Each nozzle is a section. This individual nozzle control opens up new dimensions and precision in crop protection.

#### SMART NOZZLE:

Smart Nozzle uses altek valves fitted to each nozzle, either Direct Control / Multi-Spray twin or quad / Elektra depending on the customers requirements.

#### APPLICATION SAVINGS:

Reduction in overlaps results in chemical application savings in excess of 10%. In addition by filling the sprayer with the volume of chemical actually required less chemical is wasted in washing out operations.

Increased accuracy during liquid fertilizer application reduces the possibility of crop damage from over / under application.

#### WHAT USERS SAY:

“We no longer send excess chemical back to the manufacturer as we only buy the quantities we need. We were expecting the reductions in overlaps to bring slight savings in chemical applications of around 4-5%, but in reality, the savings we have seen are a minimum of 10%.”

Ian Wilson, H. A. DAY, Greet Farm Gloucestershire,  
in: Arable Farming, March 2014 (3 seasons)

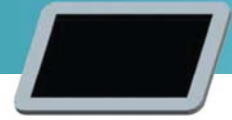
“My original objective in purchasing the Smart Nozzle System was to reduce the unacceptable spray overlap caused as my sprayer, an Alanco Sprayranger, had only 3 sections on a 18 m boom. Now into my 4th season we have seen our chemical use reduced by 13-14%.

The initial cost of the system was recouped in less than 3 years on a 500 acre farm. An unexpected benefit of the system was the sheer ease of use in field with the Smart Nozzle System taking care of all the nozzle switching. Prior to the start of this season we have upgraded our system to the latest Android Tablet, this is very user friendly and the new guidance added to the system is the business! The system can be transferred fairly easily should sprayer be changed.”

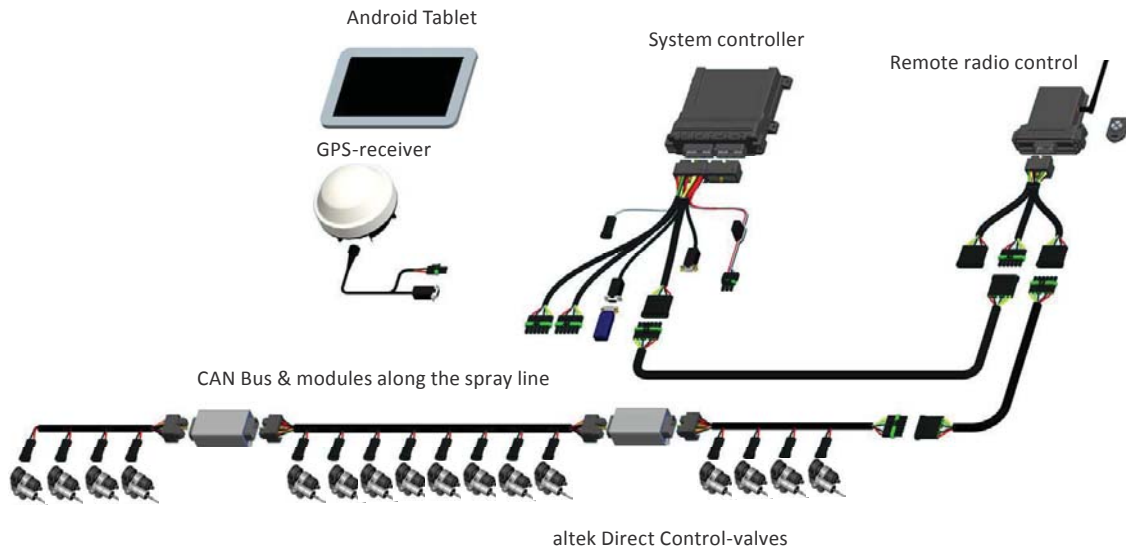
Giles Swift, Wealden, Kent, March 2014 (4 seasons)

“This is our second smart nozzle system, the original system we had fitted to a nine year old trailed Knight laser sprayer. We have a lot of irregular shaped fields so it is very difficult to avoid “double dosing” which was easy to spot in particular after liquid nitrogen applications by the Vs that we had in the field. The savings on chemical, time, operator fatigue and reduced crop damage, made it an easy decision when we purchased a new Hardi Navigator 2 years ago to have the latest Android / Bluetooth smart nozzle system fitted.”

Richard Day, Wrawby, Brigg, North Lincolnshire,  
March 2014 (5 Saisons)



**THE ALTEK / HARRISON GPS - OPERATED SMART NOZZLE SYSTEM**  
NOW WITH BLUETOOTH CONNECTIVITY AND GUIDANCE



APPLICATION ACCURACY AND COST BENEFITS WITH INDIVIDUAL NOZZLE CONTROL